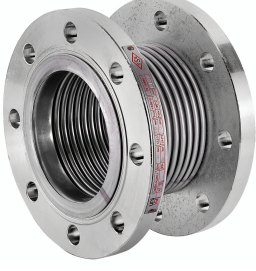


> DÖNER FLANŞLI METAL KOMPANSATÖR (LAYNERLİ) METAL EXPANSION JOINT (WITH LINER)

UEJ-0902



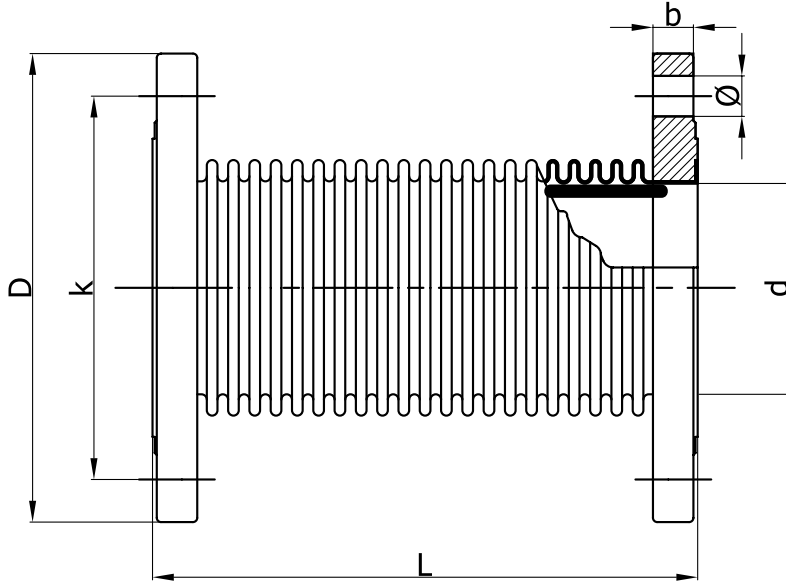
CERTIFICATIONS



Basınç Sınıfı : PN16 / PN25
Körük : Paslanmaz çelik
Flanş : Karbon çelik
Layner : Paslanmaz çelik
Genleşme : 30 mm / 60 mm
Flanşlı

Pressure Rating : PN16 / PN25
Bellows : Stainless steel
Flange : Carbon steel
Liner : Stainless steel
Expansion : 30 mm / 60 mm
Flanged

PRODUCT	SIZE
UEJ-0902X025	DN 25
UEJ-0902X032	DN 32
UEJ-0902X040	DN 40
UEJ-0902X050	DN 50
UEJ-0902X065	DN 65
UEJ-0902X080	DN 80
UEJ-0902X100	DN 100
UEJ-0902X125	DN 125
UEJ-0902X150	DN 150
UEJ-0902X200	DN 200
UEJ-0902X250	DN 250



MALZEME / MATERIALS

Körük / Bellows : Paslanmaz çelik / Stainless steel
Layner / Liner : Paslanmaz çelik / Stainless steel
Flanş / Flange : Karbon çelik / Carbon steel

GENEL ÖZELLİKLER / GENERAL PROPERTIES

Standart No : TS 10880
Basınç Sınıfı / Pressure Rating : PN16 / PN25
Maksimum Çalışma Sıcaklığı / Maximum Working Temp. : 420 °C

DN	L (30mm)	L (45mm)	L (60mm)	D	d	k	b	n	Ø
25	110			115	43	85	18	4	14
32	110			140	43	100	18	4	18
40	120	150		150	49	110	18	4	18
50	120	150		165	61	125	18	4	18
65	120	150	180	185	77	145	18	4	18
80	120	150	180	200	89	160	20	8	18
100	120	150	185	220	115	180	20	8	18
125	125	155	190	250	140	210	22	8	18
150	130	155	200	285	169	240	22	8	22
200	150	190	230	340	220	295	24	12	22
250	165	205	245	405	274	355	26	12	26