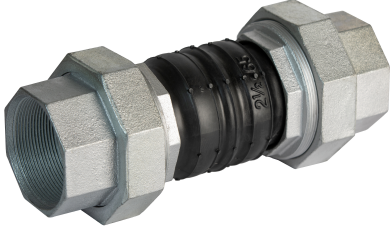


## > KAUÇUK KOMPANSATÖR DİŞLİ

### RUBBER EXPANSION JOINT WITH UNION

#### REJ-0902



#### CERTIFICATIONS



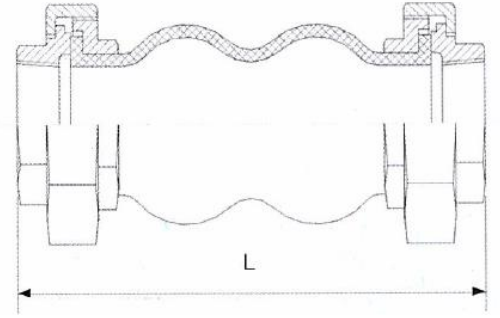
**Basınç Sınıfı** : PN16  
**Gövde** : Cord takviyeli EPDM  
**Rekorlar** : Pik Döküm (GG25)

**Pressure Rating** : PN16  
**Body** : EPDM with Cord Fabric  
**Union** : Cast Iron

PRODUCT	SIZE
REJ-0902X015	DN 15
REJ-0902X020	DN 20
REJ-0902X025	DN 25
REJ-0902X032	DN 32
REJ-0902X040	DN 40
REJ-0902X050	DN 50
REJ-0902X065	DN 65

#### GENEL ÖZELLİKLER / GENERAL PROPERTIES

Standart No : TS 10880  
Basınç Sınıfı / Pressure Rating : PN16  
Maksimum Çalışma Sıcaklığı / Maximum Working Temp. : 120 °C



Boyut	L	Eksenel Hareket	Açısal Hareket
1/2"	200	22	45°
3/4"	200	22	45°
1"	200	22	45°
1 1/4"	200	22	45°
1 1/2"	200	22	45°
2"	200	22	45°
2 1/2"	200	22	45°