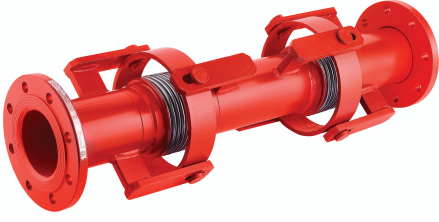


> DİLATASYON VE SİSMİK KOMPANSATÖRÜ (FLANŞLI)

SISMIC EXPANSION JOINT

UDJ-0902



CERTIFICATIONS

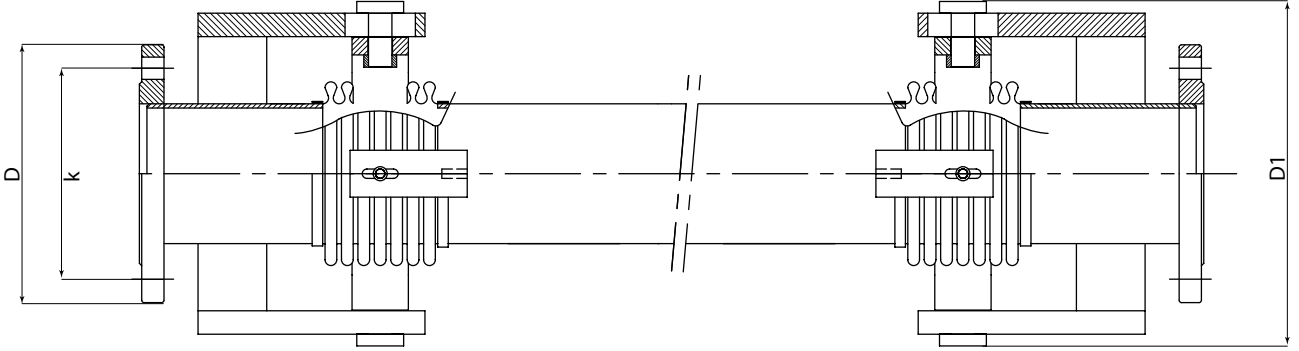


Basınç Sınıfı : PN16
Körük : Paslanmaz çelik
Boru : Karbon çelik

Pressure Rating : PN16
Bellow : Stainless steel
Pipe : Carbon steel

Genleşme / Expansion:
X=±50 mm Y,Z: ±50 mm
X=±50 mm Y,Z: ±100 mm
X=±50 mm Y,Z: ±150 mm
X=±50 mm Y,Z: ±200 mm

PRODUCT	SIZE
UDJ-0902X025	DN 25
UDJ-0902X032	DN 32
UDJ-0902X040	DN 40
UDJ-0902X050	DN 50
UDJ-0902X065	DN 65
UDJ-0902X080	DN 80
UDJ-0902X100	DN 100
UDJ-0902X125	DN 125
UDJ-0902X150	DN 150
UDJ-0902X200	DN 200
UDJ-0902X250	DN 250



MALZEME / MATERIALS

Körük / Bellow : Paslanmaz çelik / Stainless steel
Layner / Liner : Paslanmaz çelik / Stainless steel
Boru / Pipe : Karbon çelik / Carbon steel
Mafsallar / Blade : Karbon çelik / Carbon steel
Flan / Flange : Karbon çelik / Carbon steel

GENEL ÖZELLİKLER / GENERAL PROPERTIES

Standart No : TS 10880
Basınç Sınıfı / Pressure Rating : PN16 / PN25
Maksimum Çalışma Sıcaklığı / Maximum Working Temp. : 420 °C

DN	L (x:±50 Y,Z:±50)	L (x:±50 Y,Z:±100)	L (x:±100 Y,Z:±150)	L (x:±100 Y,Z:±200)	D	k	D1
25	730	930	1130	1330	115	85	140
32	730	930	1130	1330	140	100	140
40	730	930	1130	1330	150	110	140
50	790	990	1190	1400	165	125	170
65	790	990	1240	1500	185	145	190
80	840	1040	1270	1500	200	160	225
100	840	1040	1300	1550	220	180	250
125	970	1170	1480	1770	250	210	275
150	970	1170	1480	1770	285	240	305
200	1140	1360	1710	2060	340	295	360
250	1140	1360	1710	2060	405	355	440